

The Fourth Regional Plan for the New York Metropolitan Area

Westchester County Association

May 22, 2018

Kate Slevin

Senior Vice President, State Programs and Advocacy



Regional Plan Association

fourthplan.org

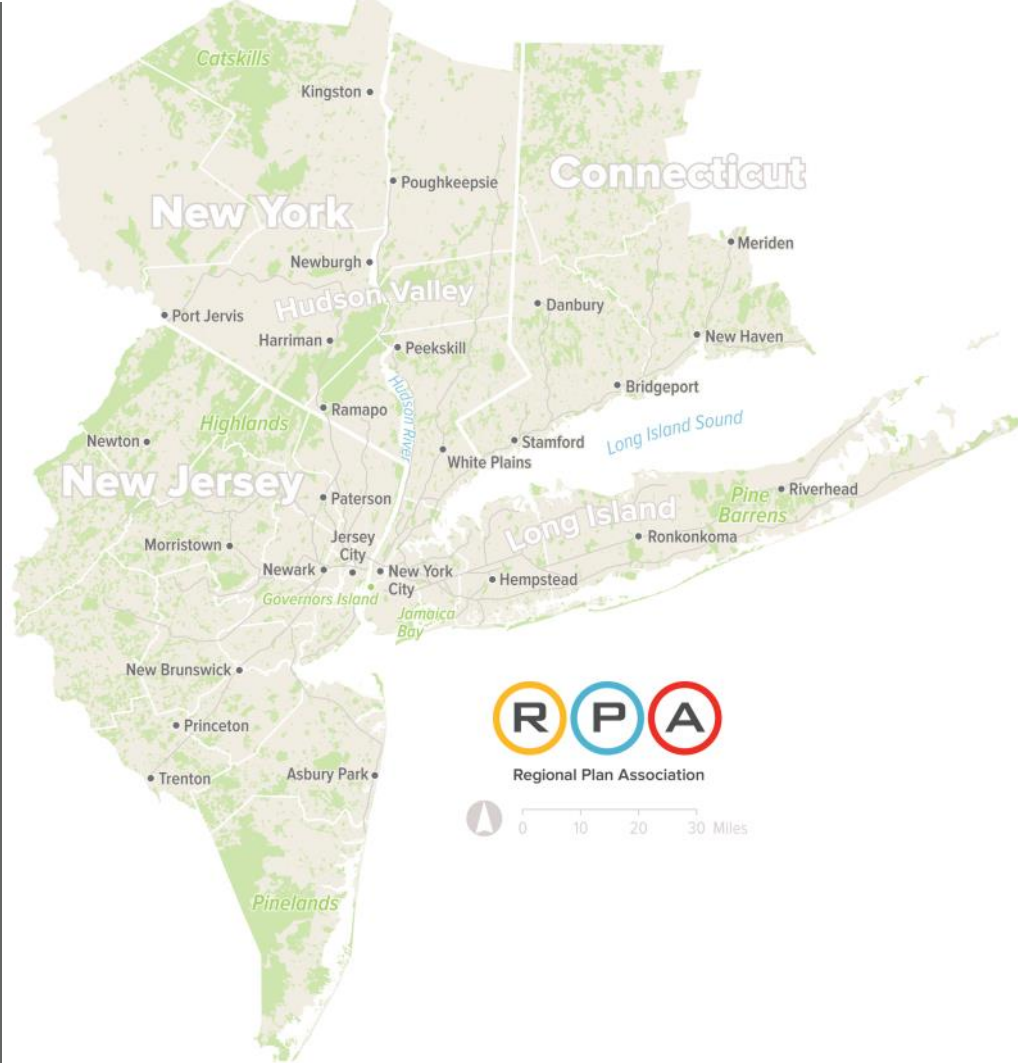


23 million residents

\$1.8 trillion economy

13,000 square miles

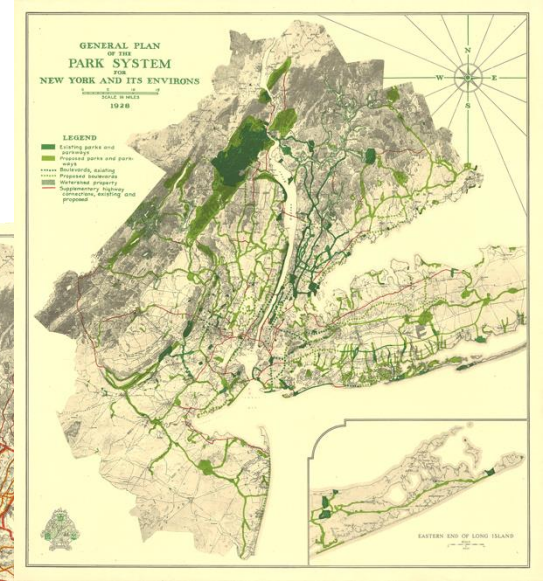
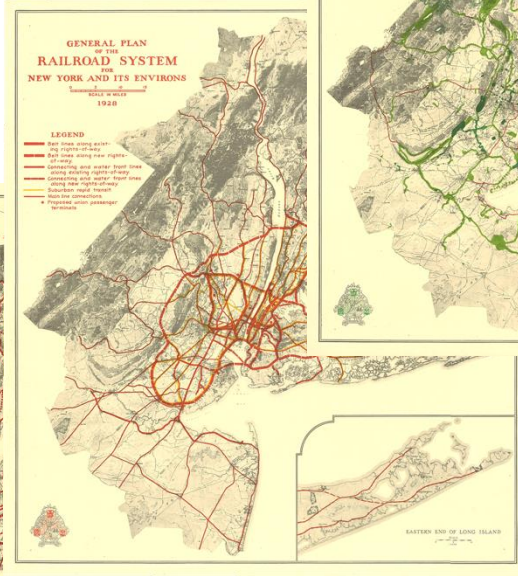
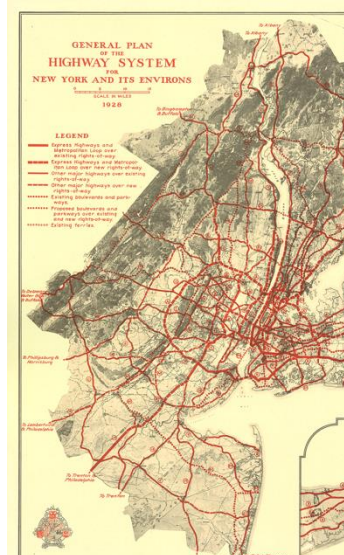
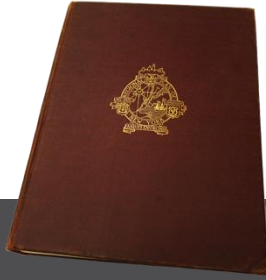
782 municipalities



1929

The First Regional Plan

Blueprint for an expanding region



1968

The Second Regional Plan

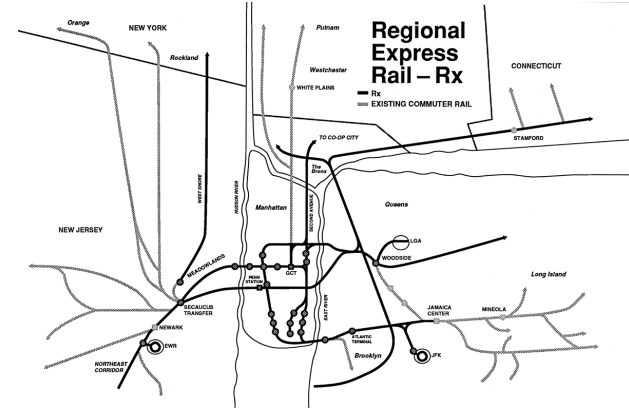
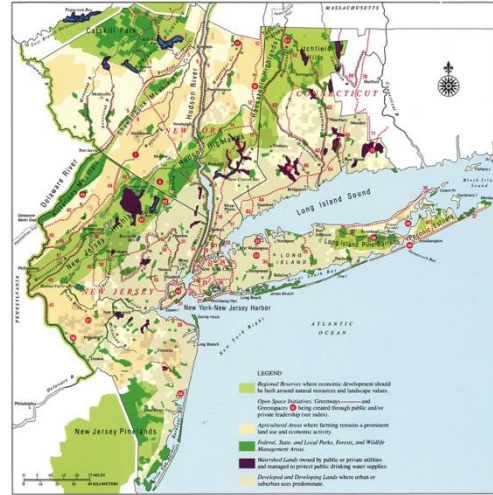
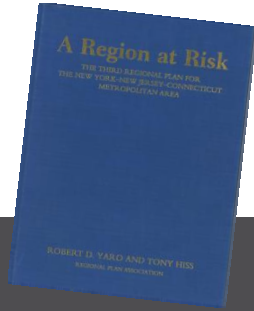
Response urban decline and suburban sprawl



1996

The Third Regional Plan

Rescuing “A Region At Risk”



The Fourth Plan: Making the Region Work for All of Us



Equity



Health

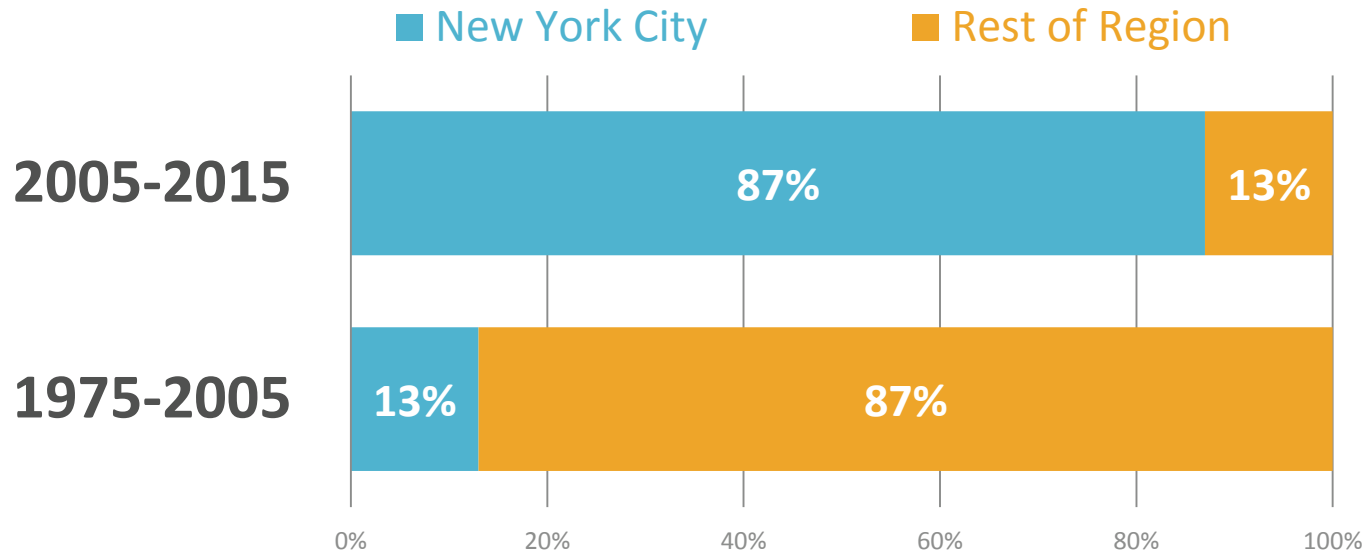


Prosperity



Sustainability

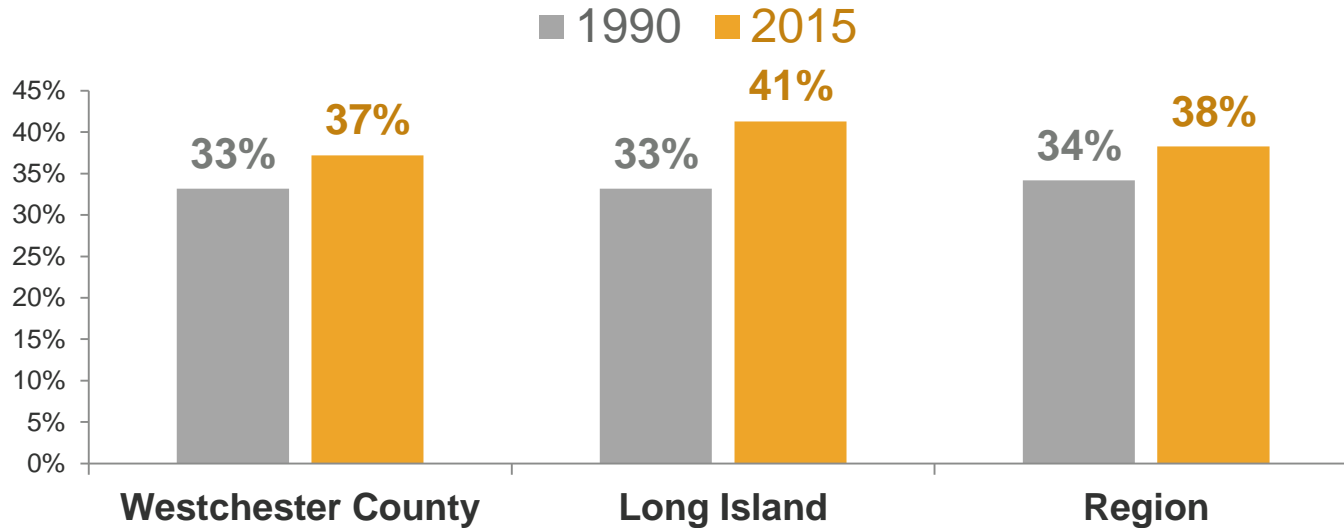
A complete reversal of postwar growth patterns



Percentage of Net New Jobs

Cost of housing is increasing across all geographies and incomes..

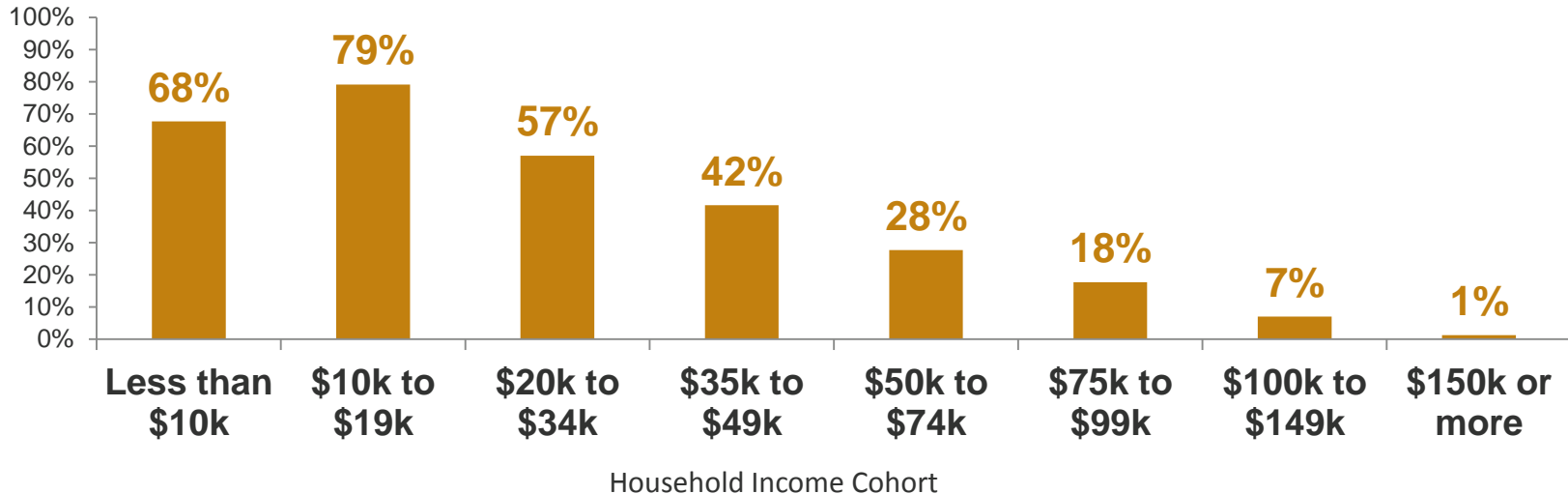
Share of Housing Cost Burdened* Households



*Household Paying 30% or more of income on housing

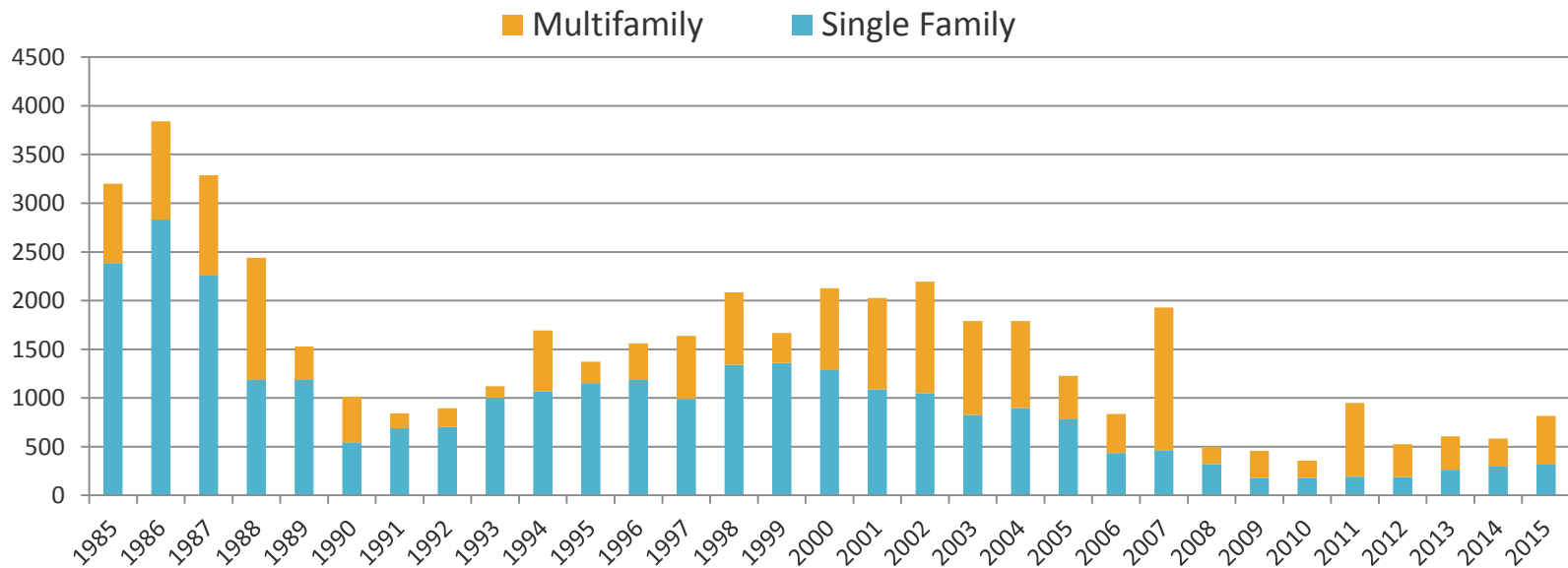
...with an affordability crisis for low-income households

Percentage of Households per Income Cohort Paying More than 50% of their income for housing in Westchester



Declining housing production, with multi-family outpacing single-family

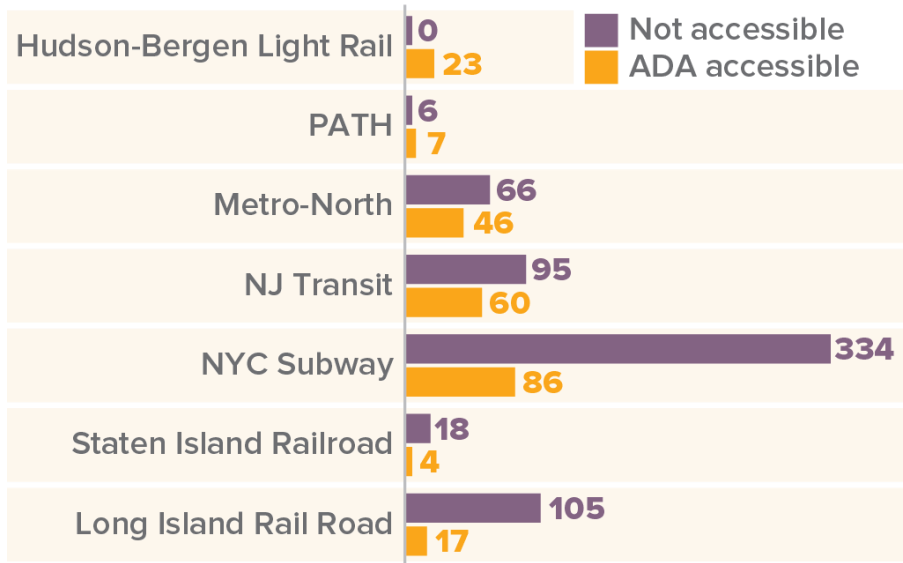
Housing Permits Issued in Westchester County, 1980-2015



The region has outgrown an aging and inadequate transportation system.



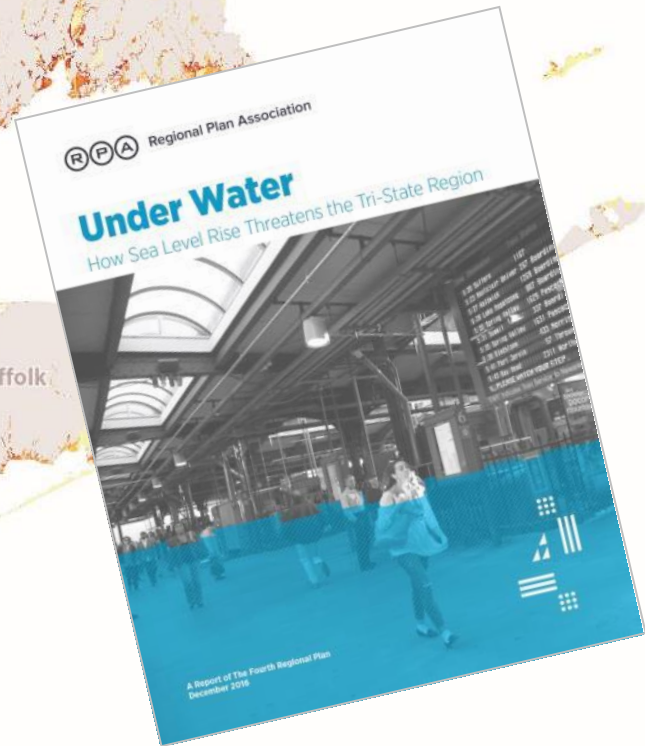
Train stations that meet the Americans With Disabilities Act standards for accessibility, 2015



Sources: Metropolitan Transportation Agency, Port Authority of New York and New Jersey, New Jersey Transit

Climate change has emerged as an existential threat.

By 2050, the number of people living in areas at risk of flooding will rise from one million to two million.



A map of a coastal region, likely the Chesapeake Bay area, showing a 1-foot sea level rise projection. The land is shaded in light gray, and the water is white. Blue lines and areas represent the extent of the 1-foot rise, which significantly inundates the coastal lowlands and wetlands. The text '1 Foot' is prominently displayed in the top left corner.

1 Foot

- 60 square miles
- 19,000 residents
- 10,000 homes
- 10,000 jobs
- In 15-20 years

A map showing the coastal region of Virginia and North Carolina, with a light blue shaded area representing a 3-foot sea level rise. The shaded area covers a significant portion of the coastal plain, including the Pamlico and Albemarle-Pamlico systems. The text '3 Feet' is positioned in the upper left corner of the map.

3 Feet

- 133 square miles
- 114,000 residents
- 67,000 homes
- 62,000 jobs

A map of a coastal region, likely the Chesapeake Bay area, showing a 6-foot depth contour highlighted in blue. The contour follows the coastline and extends into the bay. The text "6 Feet" is located in the top left corner.

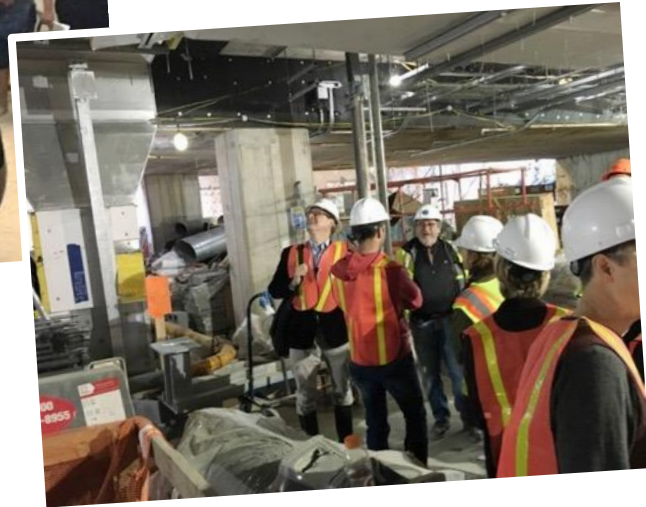
6 Feet

- 280 square miles
- 620,000 residents
- 308,000 homes
- 363,000 jobs

Fourth Plan Process

People

We have involved hundreds of the region's experts in housing, transportation, land use, and environmental issues to give us regular feedback at a multiyear series of meetings, forums and one-on-one conversations.



Fourth Plan Process

Partnerships

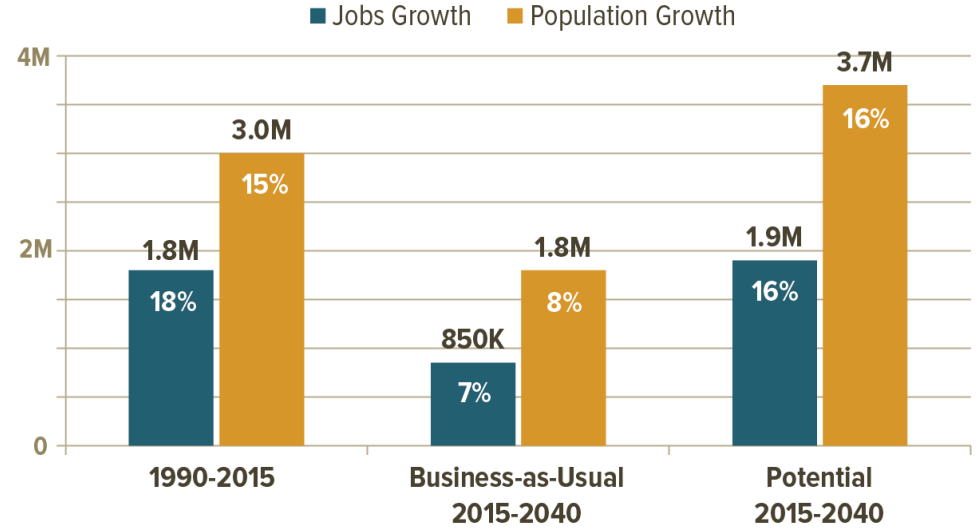


- Community Voices Heard (Hudson Valley)**
- Partnership for Strong Communities (Connecticut)**
- Housing and Community Development Network (New Jersey)**
- Make the Road Connecticut (CT and LI)**
- New York Communities for Change (Long Island)**
- Right to the City Alliance (New York City & National)**
- Alliance for a Greater New York (New York City)**



Diagnosis

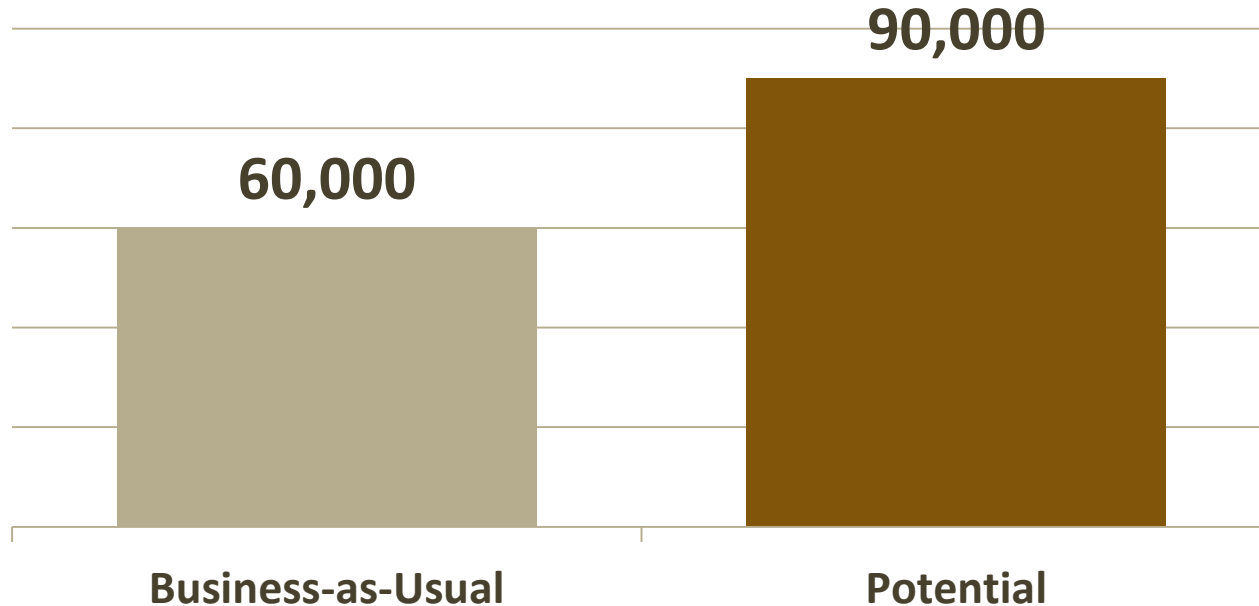
Vision



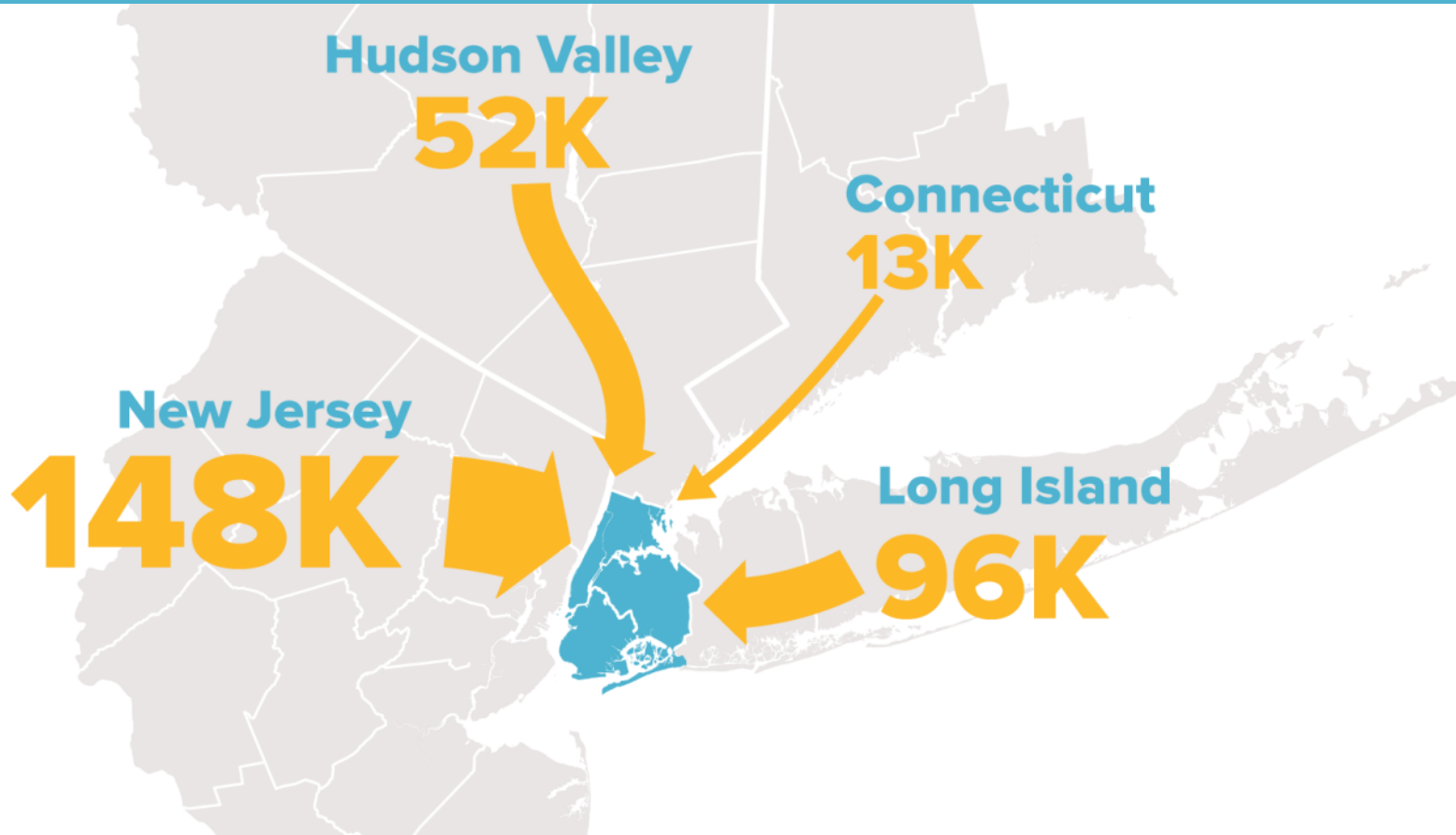
2015 Jobs: 11.6 M
2015 Population: 22.9 M

Potential growth would require 2.2 million new units over 25 years, or 90,000 per year

Annual Housing Production



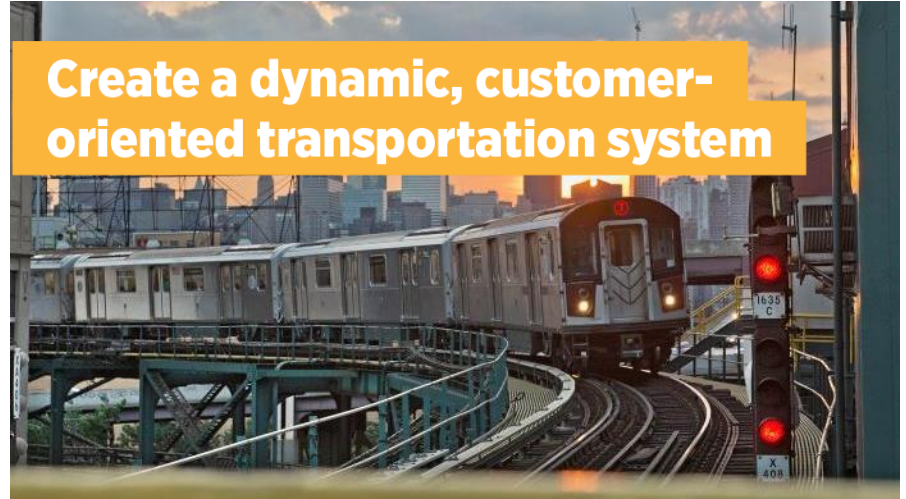
Projected increase in NYC-bound commuters, 2010-2040



**Rise to the challenge
of climate change**



**Create a dynamic, customer-
oriented transportation system**



**Make the region
affordable for everyone**



**Fix the institutions
that are failing us**



Make the region affordable for everyone

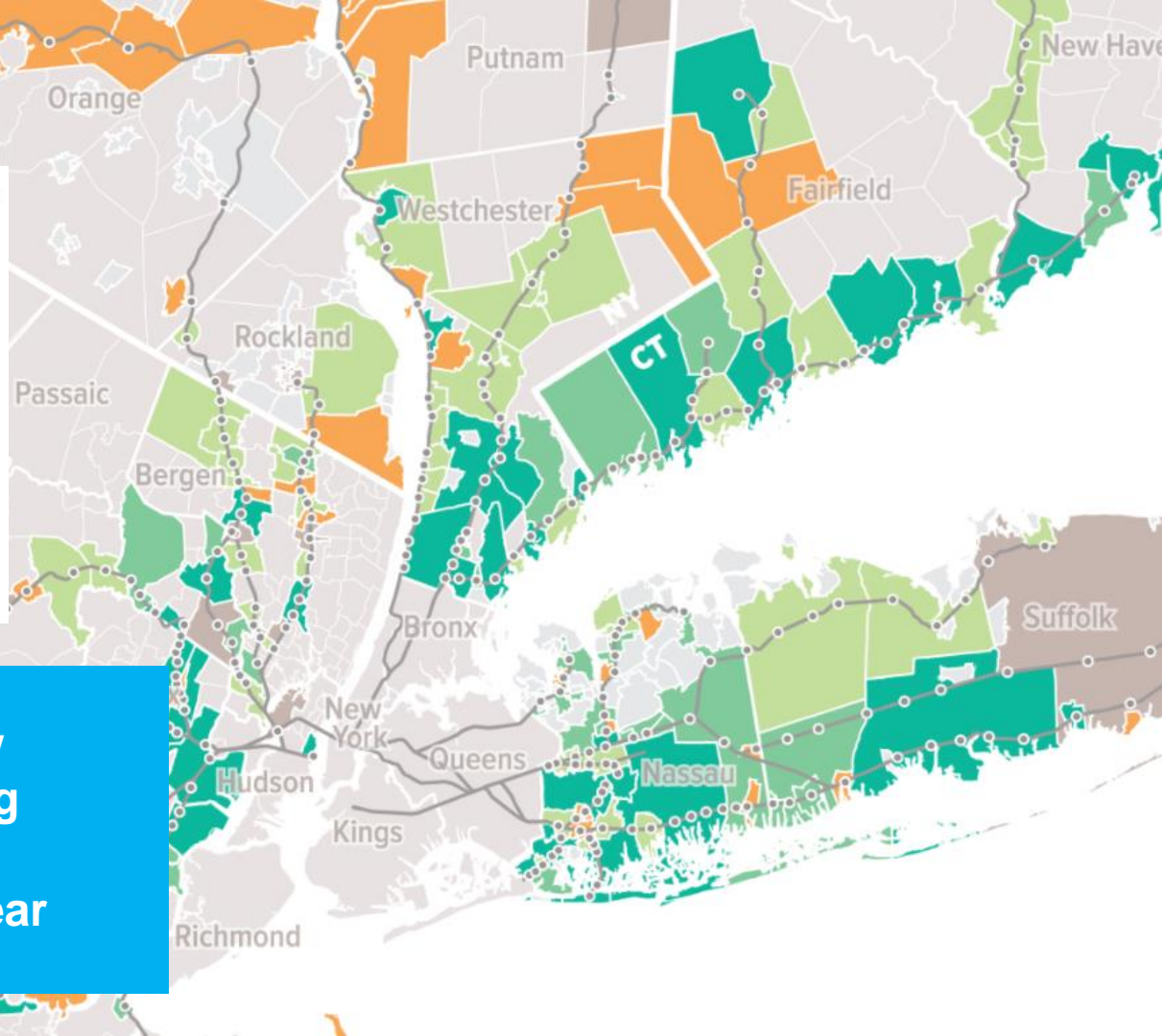
- Create a million additional new homes (beyond base case) mostly in transit-accessible locations, and across a range of price points
- Prevent displacement and promote mixed-income communities
- Create well-paying job opportunities throughout the region
- Turn environmentally burdened neighborhoods into healthy communities

Multifamily Friendliness Score by Regional Rail Stations

Source: RPA Analysis of Municipal Zoning Codes within one half mile of each station



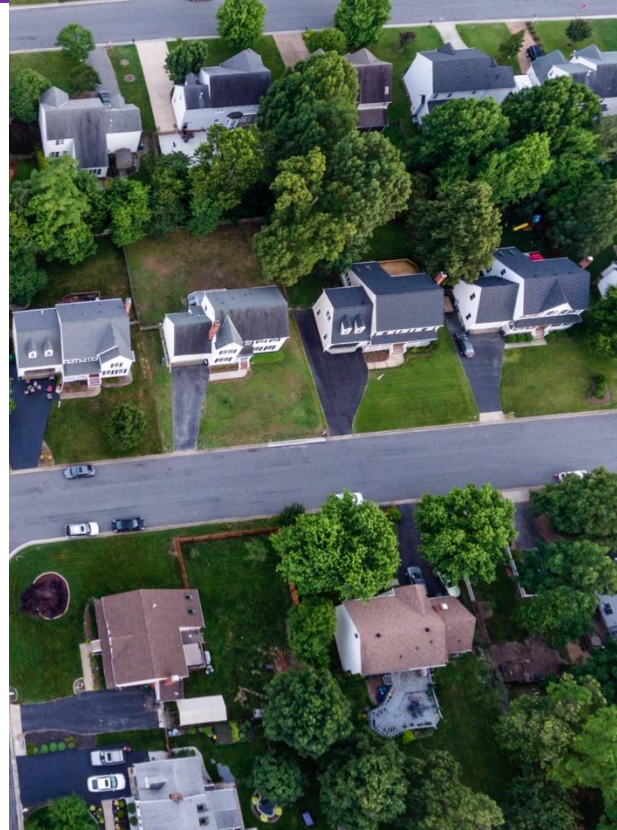
We can create an additional 250,000 new homes by redeveloping increasingly under utilized parking lots near rail stations.



Create a Dynamic, Customer Oriented Transportation System

- Totally reconstruct and modernize the subway within 15 years
- Create more regional connectivity with a unified, integrated, expanded regional rail
- Improve transit service in the areas outside of NYC
- Design streets for people
- Expand capacity at JFK and Newark Airports

Fix the institutions that are failing us



Fix the institutions that are failing us

- Reduce reliance on local property taxes
- Reform the MTA
- Create regional school districts and services
- Increase civic engagement and make planning and development more inclusive, predictable and efficient
 - Long term immigrant residents new voting rights -- voting in school board elections
 - Predictable development processes- engagement early in the process

The Fourth Regional Plan

www.fourthplan.org

www.rpa.org



Equity



Health



Prosperity



Sustainability